

AMERICAN AVK SERIES 27 SWING CHECK VALVE, 250 PSI
Tested to AWWA C508 - Resilient Seated Swing - Valve Size 6"
Spigot by Mechanical Joint Ends in accordance with ANSI/AWWA C111/A21.11

27/SCV
DRY/HYD/CHK

Use:

For water to maximum 160°F.

Tests:

Hydraulic test to AWWA C508:

Shell Test: 500 PSI

Seat Test: 250 PSI

Optional Extras:

316 Bolting

PUR Coating

Standard Materials:

Body, Bonnet, Ductile iron, ASTM A536

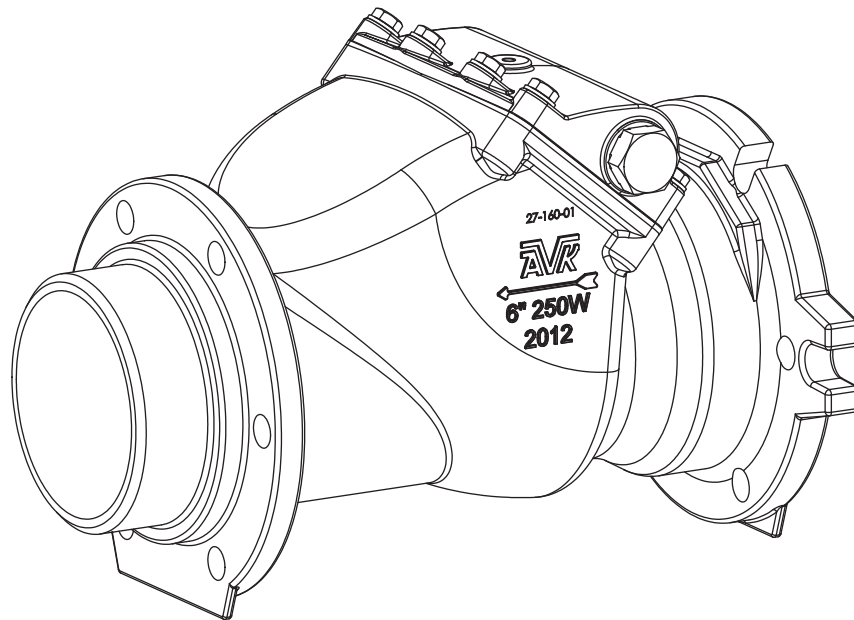
Coating Electrostatically applied fusion-bonded epoxy.
Meets or exceeds AWWA C550

O-Rings, NBR
Bonnet Gasket

Shaft, Bonnet Bolts, Stainless steel
Washers, Keys

Bushings Bronze

Disc EPDM rubber with a carbon steel core

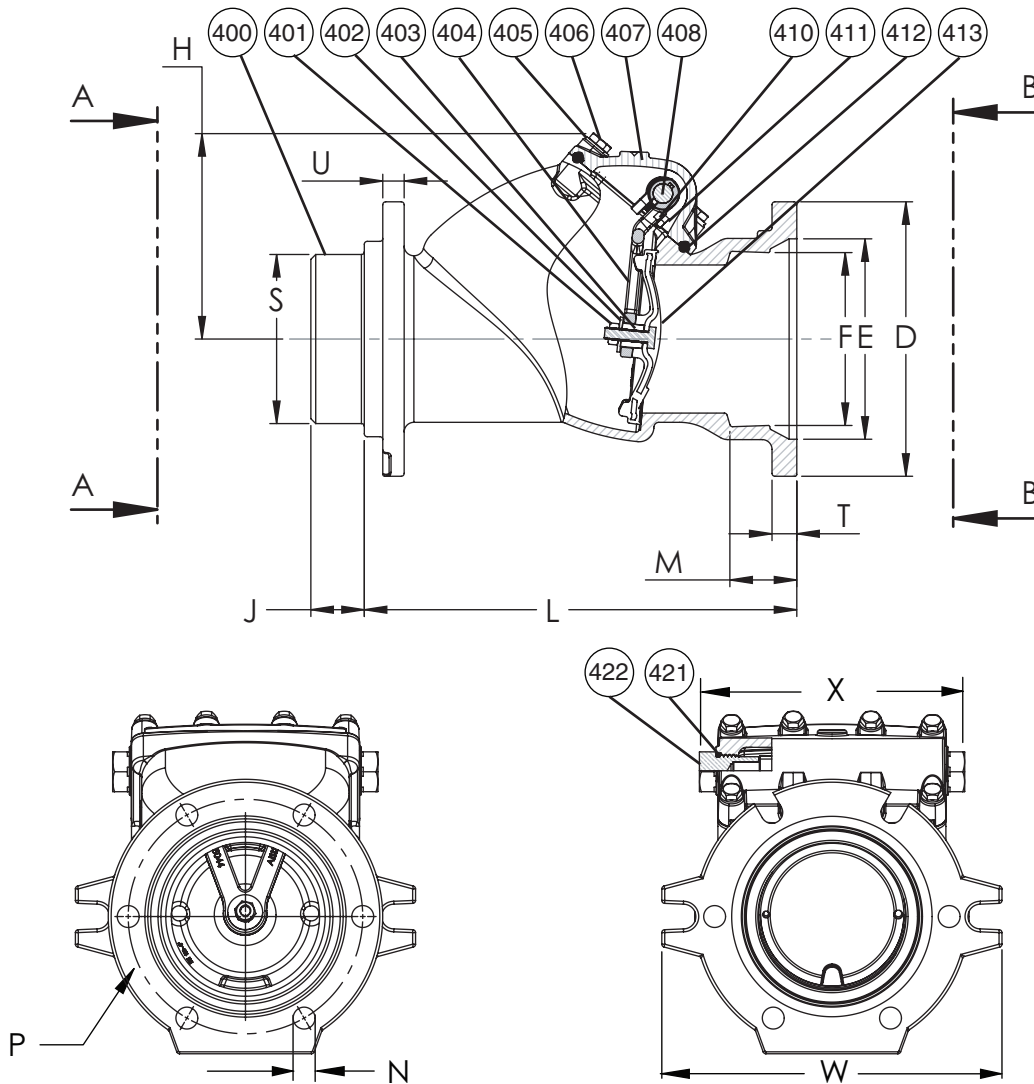


AMERICAN AVK SERIES 27 SWING CHECK VALVE, 250 PSI
Tested to AWWA C508 - Resilient Seated Swing - Valve Size 6"
Spigot by Mechanical Joint Ends in accordance with ANSI/AWWA C111/A21.11

27/SCV
DRY/HYD/CHK

Components

400. Body	406. Bonnet Bolt	413. Disc
401. Disc Nut**	407. Bonnet	421. Outer Bushing O-ring
402. Disc Washer	408. Shaft	422. Closed Bushing
403. Disc Bushing	410. Lock Washer	
404. Hinge	411. Hinge Bolt	
405. Bonnet Washer	412. Bonnet Gasket	



Ref No.	Size/ID	D	E	F	H	J	L	M	N	P	S	T	U	W	X	Flange Holes	Weight (lbs.)
27-SCV	6"	11.12"	8.12"	7.00"	8.32"	2.17"	17.52"	2.71"	0.89"	9.50"	6.85"	1.00"	0.87"	13.78"	10.50"	6	112

